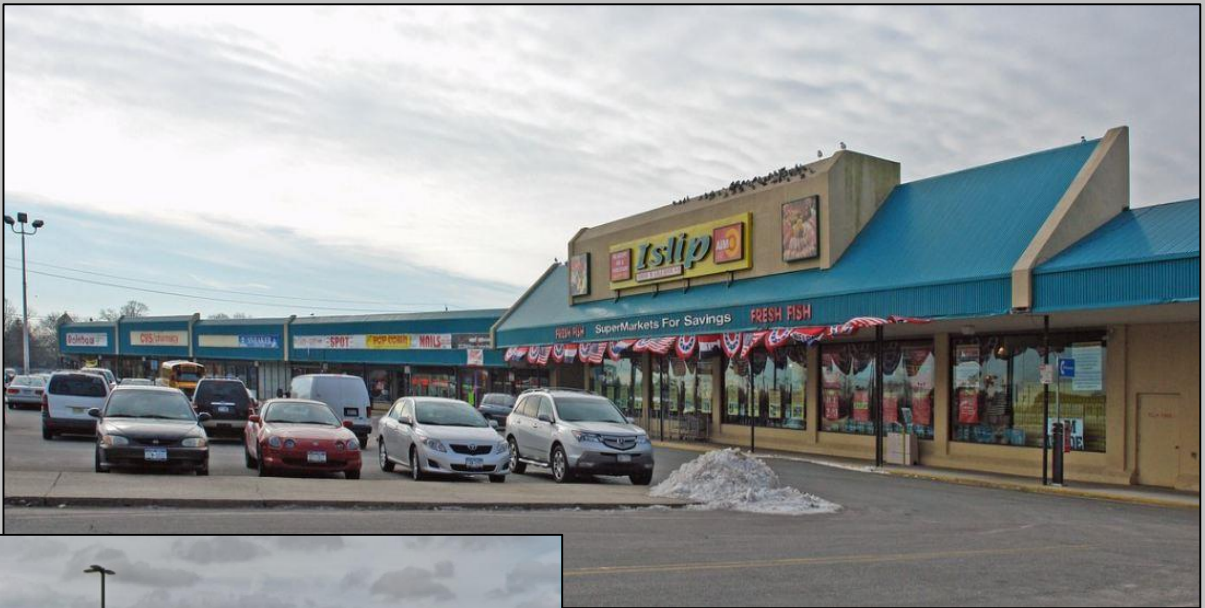




Island Associates Real Estate Inc.

**Islip Plaza  
2-32 Wheeler Road  
Central Islip, NY  
Padsite Available**



**Island Associates Real Estate Inc.**

**Roger A. Delisle, Jr. - [roger@islandassociates.com](mailto:roger@islandassociates.com)**

**Robert Monahan - [robert@islandassociates.com](mailto:robert@islandassociates.com)**

**Terence McMahon - [terence@islandassociates.com](mailto:terence@islandassociates.com)**

**(631) 982-2100**

**[www.islandassociates.com](http://www.islandassociates.com)**



# Property Info

**2,000 SF – 2,500 Padsite Available**

Price: \$100,000 / NNN

Demographics	1 Mile	3 Miles	5 Miles
Total Population	21,749	101,469	245,271
Median HH Income	\$70,421	\$82,761	\$93,685



Join Islip Market, Checkers, Rainbow, Advance Auto Parts and Rent-A-Center.  
Nearby businesses include McDonald's, Taco Bell, CVS, Auto Zone & Citibank.



Busy intersection of Wheeler Road and Suffolk Avenue



±15,400 Daily Traffic Counts on Wheeler Road and ±18,800 on Suffolk Ave.



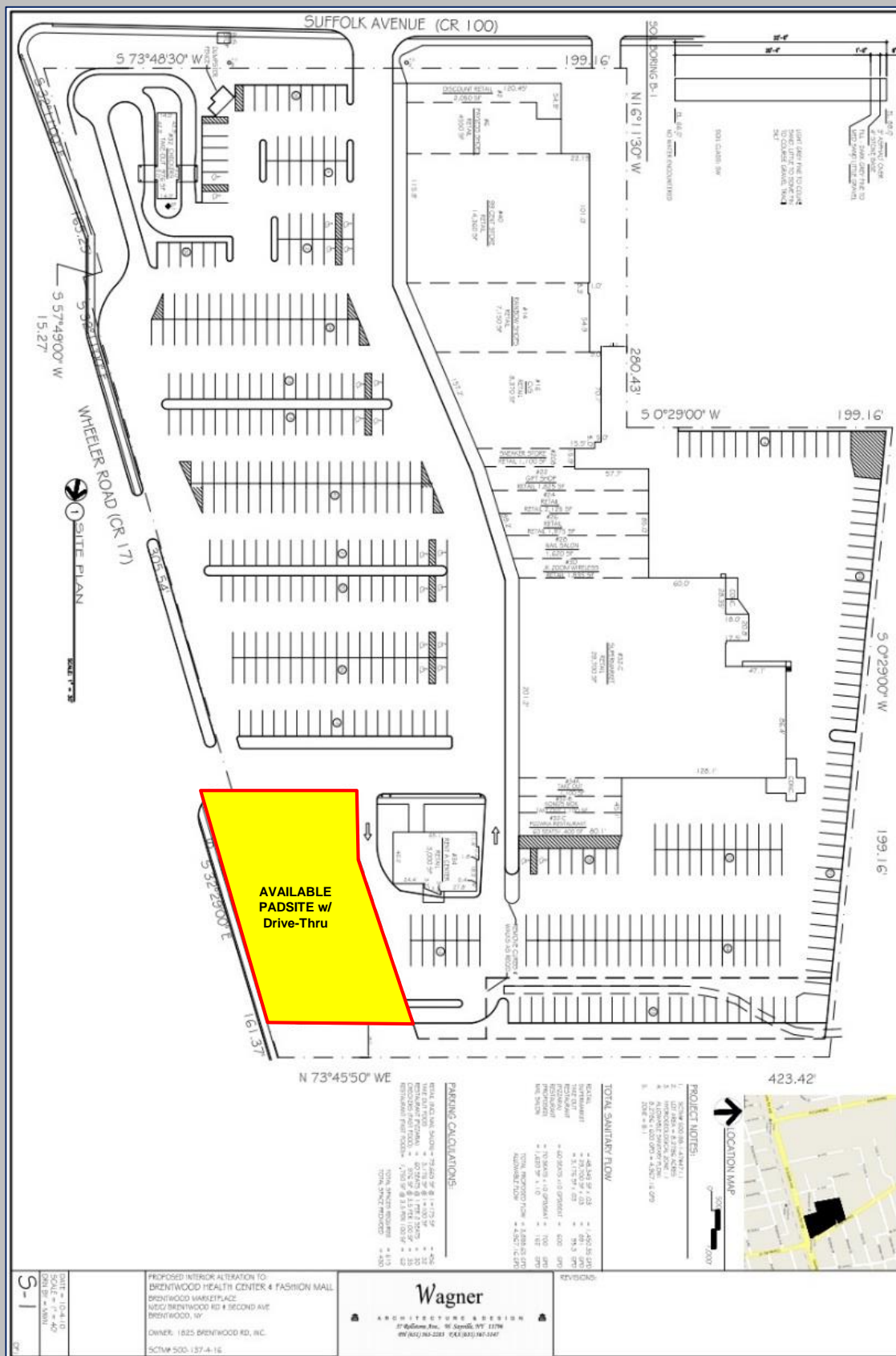
Located 1-Mile South of the LIE

*All information is subject to errors, omissions, modification, and withdrawal.  
Information is from sources deemed to be reliable but should not be relied upon without independent verification.*

# Property Aerial & Map



*All information is subject to errors, omissions, modification, and withdrawal.  
Information is from sources deemed to be reliable but should not be relied upon without independent verification.*



*All information is subject to errors, omissions, modification, and withdrawal.*

*Information is from sources deemed to be reliable but should not be relied upon without independent verification.*