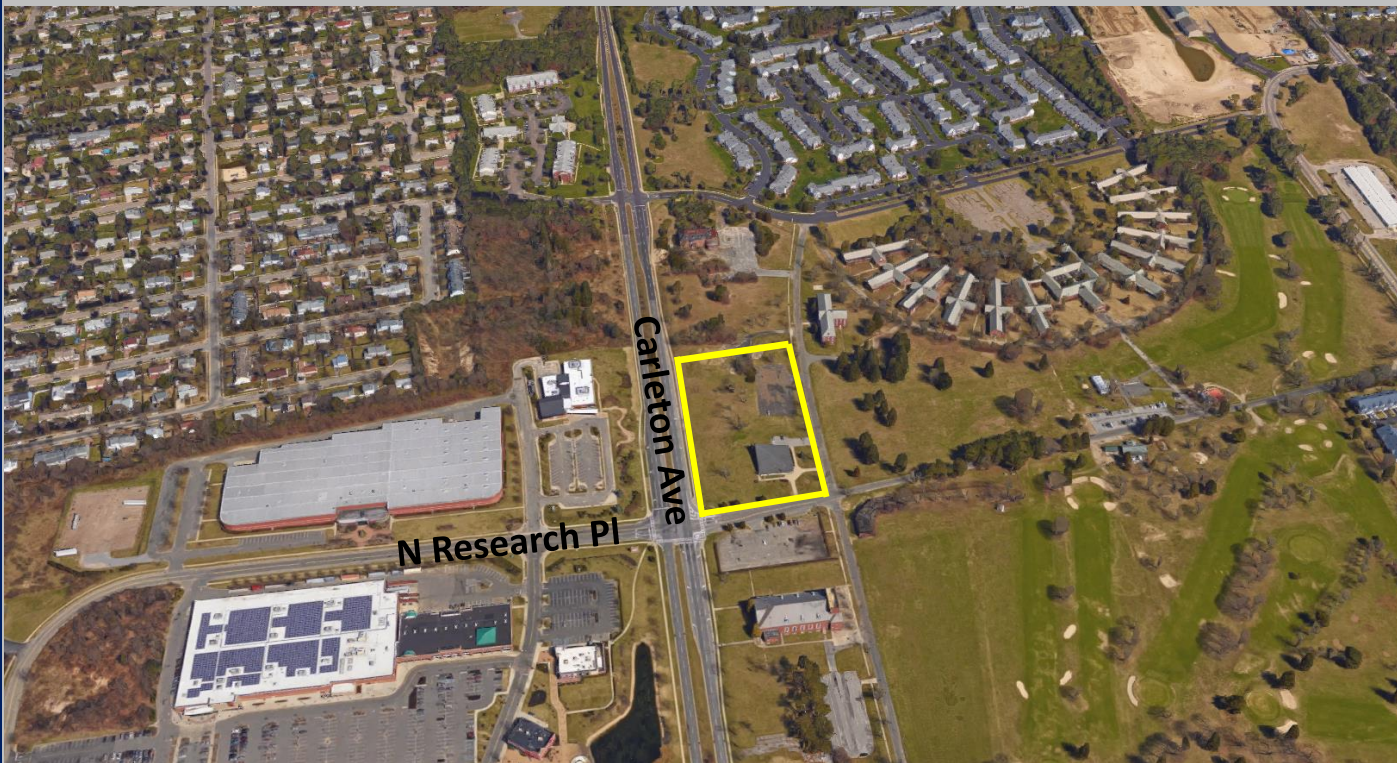




Island Associates Real Estate Inc.

We create value

4 Acres Available Carleton & Gullhaven Central Islip, NY



Robert Monahan

Robert@IslandAssociates.com

(631) 982-2100

Terence McMahon

Terence@IslandAssociates.com

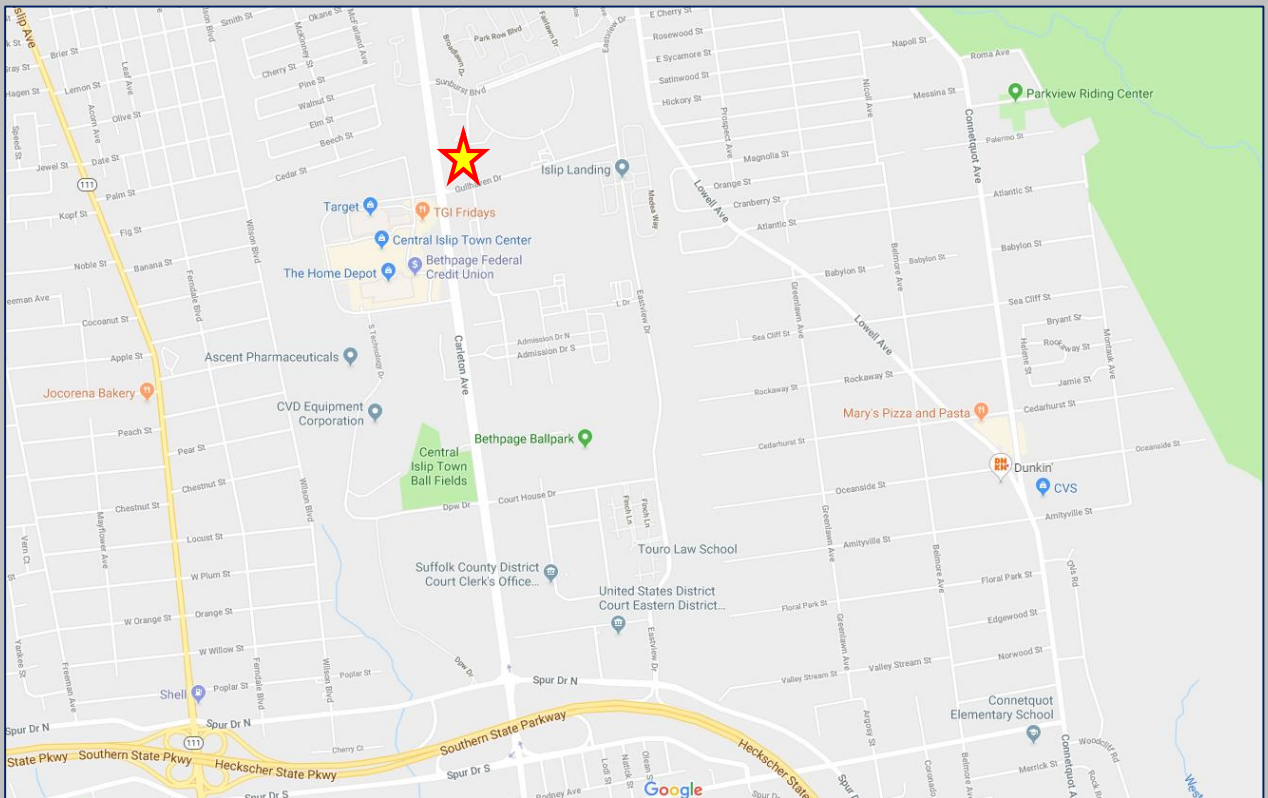
Cell: (631) 300-6564

Property Information

4 Acres (up to 6 Acres) Available for Development

Price: TBD

Demographics	1 Mile	3 Miles	5 Miles
Total Population	14,709	99,947	241,048
Median HH Income	\$70,637	\$83,420	\$89,892



❖ +/- 315' of Frontage on Gullhaven Dr. &

+/- 545' of Frontage on Carleton Ave.

❖ Curb/Gutter/Sidewalk, Electricity, Gas, Sewer, Water

❖ Over 20,000 Daily Vehicle Counts

All information is subject to errors, omissions, modification, and withdrawal.

Information is from sources deemed to be reliable but should not be relied upon without independent verification.