



Island Associates Real Estate Inc.

We create value

For Sale
449 Edwards Avenue
Calverton, NY



Chris Mayor

Chris@IslandAssociates.com

(631) 513-2000

Larry Densen

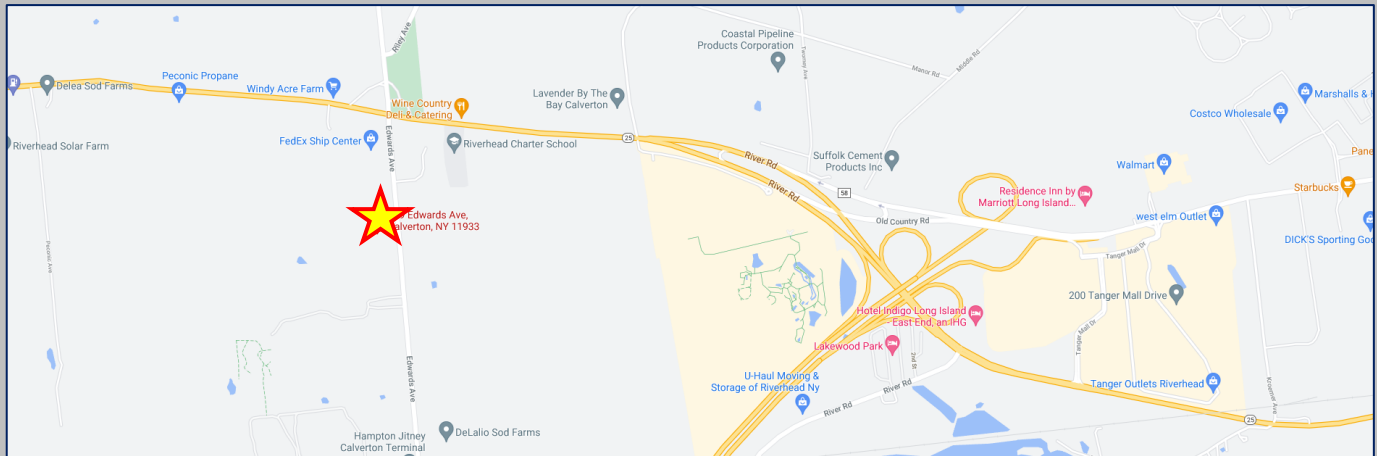
Larry@IslandAssociates.com

(516) 857-5564

Property Information

12.10 Acres Available
Price: \$425,000 Per Acre
Taxes: +/- \$31,624

Demographics	3 Mile	5 Miles	10 Miles
Total Population	8,179	30,798	136,831
Average HH Income	\$79,244	\$97,837	\$111,354

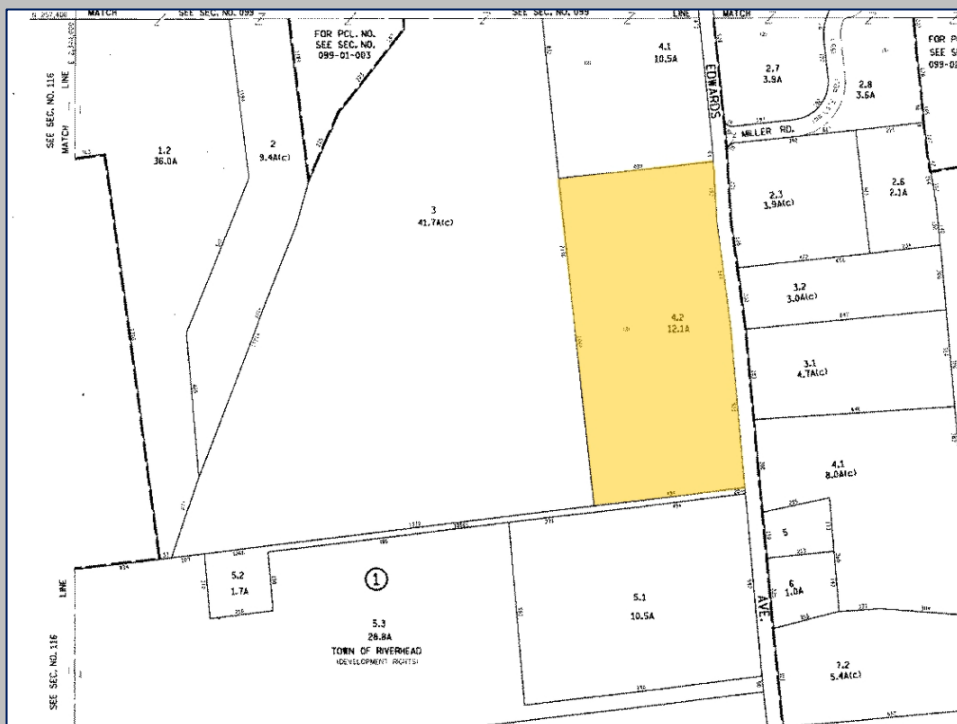


1,000' Frontage on Edwards Ave.



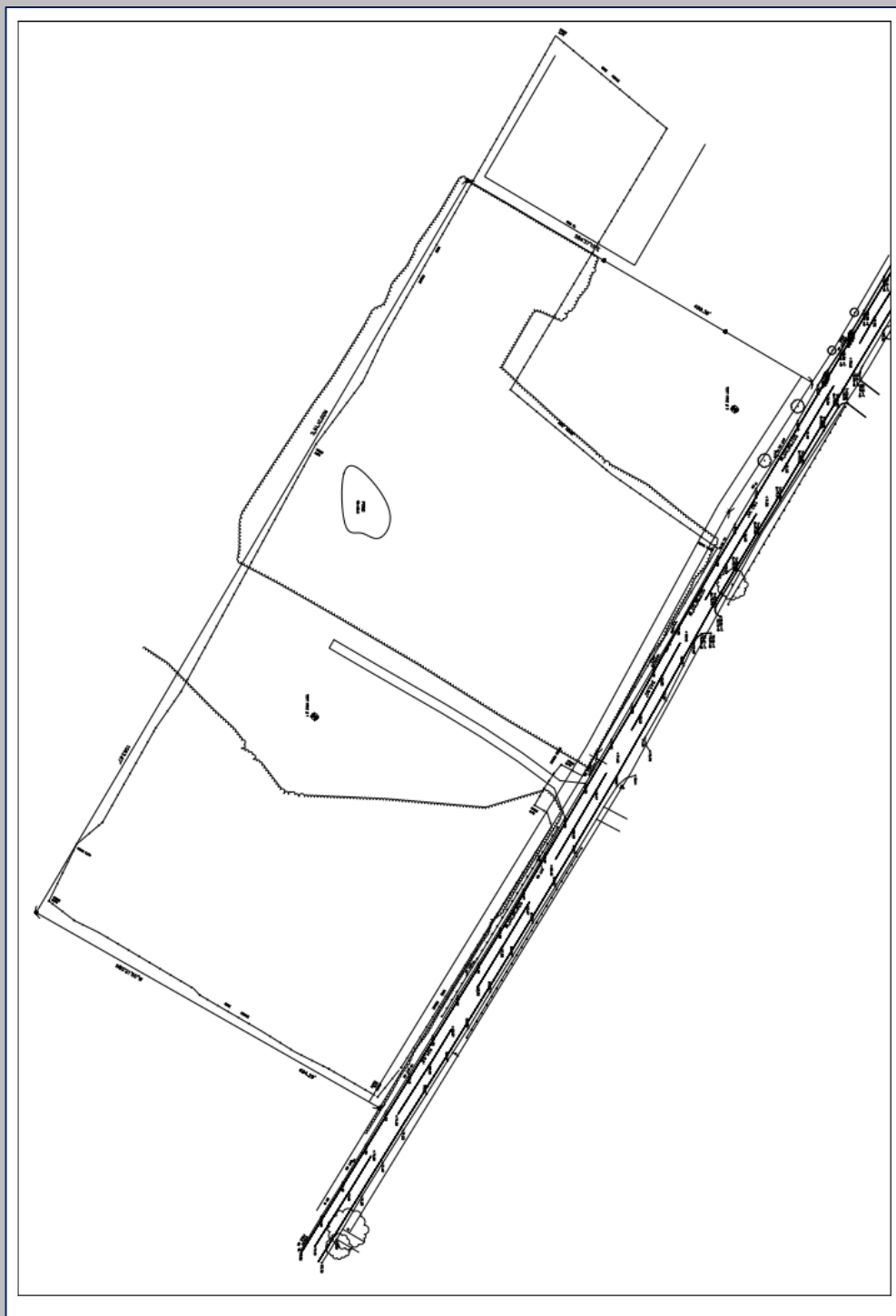
Zoned Industrial

Additional Information



All information is subject to errors, omissions, modification, and withdrawal.
Information is from sources deemed to be reliable but should not be relied upon without independent verification.

Additional Information



*All information is subject to errors, omissions, modification, and withdrawal.
Information is from sources deemed to be reliable but should not be relied upon without independent verification.*